



12-day Tour Link



10-day Tour Link

# 10/12 Days Grand Discovery of Japan

A Deeper, More Immersive Journey Through the Land of the Rising Sun

Package price  
starting from

10 Days **\$3,999** CAD

12 Days **\$4,999** CAD

40% OFF  
~~Was \$8,331~~

**Trip Code: 10-Day Tour: TP10GDJ | 12-Day Tour: TP12GDJ**

- 8/10 Nights 4 Star Hotel
- Airfare included
- 10/12 Meals
- Guided Sightseeing
- Coach, Bullet Train
- Medium-sized Group

## ♥ WHY YOU'LL LOVE IT

From the buzzing energy of Tokyo and the ancient temples of Kyoto to the peaceful deer of Nara and the vibrant food scene in Osaka, this enriching itinerary also takes you further – to the flavorful charm of Kobe, the elegance of Himeji Castle, the relaxing hot springs near Mt. Fuji, and the moving exhibits of Hiroshima's Peace Memorial Museum.

- ✓ Discover dazzling Tokyo, where ancient traditions meet cutting-edge innovation.
- ✓ Stroll through the serene Meiji Shrine, famed for its peaceful grounds and majestic architecture.
- ✓ Relax in a natural hot spring and don a Yukata robe for a memorable Mount Fuji dinner banquet.
- ✓ Cruise across Lake Kawaguchi, offering postcard-perfect views of iconic Mount Fuji.
- ✓ Ride the world-famous shinkansen (bullet train) to Kyoto.
- ✓ Wander through Kyoto, Japan's ancient capital since the 8th century, rich in heritage and beauty.
- ✓ Journey to Nara, Japan's first permanent capital, home to eight UNESCO World Heritage Sites.
- ✓ Explore the historic port city of Kobe, visit a traditional sake brewery museum, and enjoy an optional tasting of world-renowned Kobe beef.
- ✓ Reflect on history at the powerful Hiroshima Peace Memorial Museum.
- ✓ Admire the floating torii gate at Itsukushima Shrine, a revered UNESCO World Heritage Site.



**Day 1: North America – Tokyo**  
**Day 2: Tokyo Arrival**  
**Day 3: Tokyo**  
**Day 4: Tokyo**  
**Day 5: Tokyo – Mt. Fuji**  
**Day 6: Mt. Fuji – Kyoto**  
**Day 7: Kyoto**  
**Day 8: Kyoto – Nara – Osaka**  
**Day 9: Osaka – Kobe**  
**10-Day Tour: Osaka Free Day**  
**Day 10: Himeji – Kurashiki – Hiroshima**  
**10-Day Tour: Osaka – North America**  
**Day 11: Hiroshima & Miyajima**  
**Day 12: Hiroshima – North America**





## Day 1: North America – Tokyo

Board your international flight from North America to Tokyo, Japan.

## Day 2: Tokyo Arrival

Upon arriving at Narita Airport, transfer to your hotel. After check-in, enjoy the rest of the day at your leisure to rest or explore the city.

## Day 3: Tokyo

Today, explore some of Tokyo's most iconic landmarks. Begin at **Senso-ji Temple**, Tokyo's oldest Buddhist temple, and stroll down the vibrant **Nakamise shopping street** lined with traditional crafts and snacks. You may also choose the **optional Kimono Rental (US\$55/person)** and explore great photo opportunities along the ancient street in Japan's beautiful national dress. Visit **Meiji Shrine**, dedicated to the deified spirits of Emperor Meiji and his consort, Empress Shoken. Your next stop today is the **Tokyo Metro**, where you can enjoy a panoramic view of enormous Tokyo city.

**Meals:** Breakfast

## Day 4: Tokyo

Enjoy a free day to explore and enjoy bustling Tokyo at your leisure. Alternatively, you may join our **optional full-day tour to explore contemporary Tokyo (US\$159/person Min. 10 Guests)**. Begin your day at the **Imperial Palace**, where you'll see the beautiful gardens and historical significance of the residence of Japan's Emperor. Satisfy your culinary cravings at the world-famous **Tsukiji Fish Market**, you may take the opportunity to try a variety of fresh seafood or explore the local food on own expenses. Immerse yourself in the energetic chaos of **Shibuya Crossing** and pay your respects to the loyal Hachiko Statue. Finally, enjoy some leisure time in the bustling **Shinjuku district**, known for its entertainment, shopping, and dining options. Transfer back to the hotel after that. This tour offers a dynamic blend of innovation, culture, and exploration, showcasing the contemporary spirit of Tokyo.

**Meals:** Breakfast

## Day 5: Tokyo - Mt.Fuji

Today, begin with a visit to **Gotemba Peace Park**, where you can take in a breathtaking panoramic view of Mount Fuji. Continue to **Oshino Hakkai**, a tranquil village famous for its eight natural spring ponds, formed from melted snow that has filtered through the porous lava layers of Mount Fuji—resulting in crystal-clear water revered for its purity.

Next, stroll through the vibrant **Oishi Park**, known for its colorful seasonal flowers set against the majestic backdrop of Mt. Fuji. In the afternoon, enjoy a relaxing **cruise on Lake Kawaguchi**, a crater lake celebrated for its picture-perfect views of Mount Fuji. End the day with a rich cultural experience and **buffet dinner** at our welcoming hot spring hotel.

**Meals:** Breakfast, Dinner

## Day 6: Mt. Fuji - Kyoto

After breakfast, transfer to Shin-Fuji Station and **ride the Shinkansen** (bullet train) to Kyoto. Upon arrival, check in to the hotel.

In the afternoon, you may join a guided walking tour to explore Kyoto's highlights. Travel via public transportation to **Gion**, the city's most famous geisha district, and continue to **Ninenzaka and Sannenzaka**, two beautifully preserved historical streets lined with traditional wooden shops and tea houses. Stroll along these charming lanes leading up to the iconic **Kiyomizudera Temple**. Please wear comfortable walking shoes, as the tour involves moderate walking.

Afterward, you may choose to follow the tour guide to the hotel or enjoy some free time to explore the area at your own pace and make your way back to the hotel.

**Meals:** Breakfast

## Day 7: Kyoto

Spend the day at your leisure or join an **optional Kyoto Cultural Tour with lunch (USD \$179 Min. 10 Guests)**.

The tour begins with a visit to the enchanting **Arashiyama Bamboo Grove**, a serene forest of towering bamboo stalks. Stroll through the famous "Bamboo Alley," one of Kyoto's most iconic and photographed paths.

Enjoy a **traditional Japanese lunch** at a local restaurant before continuing to the sacred **Fushimi Inari-Taisha Shrine**, known for its thousands of vibrant vermilion Torii gates. Walk through these atmospheric tunnels and capture stunning photos along the historic approach.

Visit the World Cultural Heritage - **Kinkakuji (Golden Pavilion)**, with two floors covered entirely in thin layers of pure gold and detailed architecture incorporating three distinct styles of Shinden, Samurai, and Zen.

In the afternoon, participate in a **traditional tea ceremony with wagashi tasting**, where skilled tea masters will guide you through the mindful ritual of Japanese tea preparation. This immersive cultural experience offers a peaceful glimpse into Japan's refined hospitality. Afterward, relax on the return to hotel, with the evening free at your leisure.

**Meals:** Breakfast







## Day 8: Kyoto - Nara - Osaka

Today, travel to Nara to visit Nara Park and Todaiji Temple, home to the Great Buddha.

This morning, you will move to Nara, now known as Nara remains full of iconic sites. Then see **Todai-ji Temple**, one of Japan's most famous and historically significant temples, constructed in the 8th century. Wander through Nara Park, where over 1,200 **wild sika deer** roam free, before travelling to Osaka.

In the afternoon, visit the **Osaka Castle**, which played a major role in the unification of Japan during the Azuchi-Momoyama period in the sixteenth century, before being dropped off at **Dotonbori**, which exemplifies Osaka's vibrant food culture.

**Meals:** Breakfast, Lunch

## 10-Day Tour:

### Day 10: Osaka

Enjoy your free day in Osaka, you may explore the area at your own pace.

**Meal:** Breakfast

## 12-Day Tour:

### Day 9: Osaka - Kobe

Start the day with a visit to the **Hakutsuru Sake Brewery Museum**, where you'll explore the traditional sake brewing process through historical exhibits and life-sized displays.

Enjoy a complimentary tasting of freshly brewed sake at the end of your tour.

Continue to the **Kobe Port Tower** and visit its Observation Deck, where offering stunning panoramic views of Kobe's harbor, cityscape, and surrounding mountains.

Then head to **Kobe Harborland**, a vibrant waterfront area filled with shops, restaurants, and cafés. Stroll along the boardwalk or relax while enjoying views of the sea and city skyline. You may join the special Kobe Beef dinner and **taste the famous Kobe Beef (USD\$148)**.

**Meal:** Breakfast

## 10-Day Tour:

### Day 10: Osaka - North America

Enjoy your final morning in Japan before transferring to Osaka Kansai Airport for your return flight to North America.

**Meal:** Breakfast

## 12-Day Tour:

### Day 10: Himeji – Kurashiki – Hiroshima

This morning, visit the majestic **Himeji Castle**, a UNESCO World Heritage Site and Japan's most iconic and best-preserved feudal-era fortress. Admire its elegant white facade and explore the impressive wooden interiors and defensive structures.

Next, travel to the charming **Kurashiki Bikan Historical Quarter**, known for its Edo-period architecture and scenic, willow-lined canals. Enjoy a relaxing **boat ride through the canal** and take in the nostalgic atmosphere of the white-walled merchant houses and quaint shops. In the late afternoon, continue to **Hiroshima** and check in for an overnight stay.

**Meal:** Breakfast

## Optional Tours

• Modern Tokyo Exploration Tour	US\$ 159/p (Min. 10)
• Kimono Dress Rental	US\$ 55/p
• Kyoto Cultural Tour with lunch	US\$ 179/p (Min. 10)
• Special Kobe Beef dinner (12-Day Tour)	US\$ 148/p

## Day 11: Hiroshima & Miyajima

Spend the day immersed in both history and natural beauty. Start at the **Hiroshima Peace Memorial Park**, a somber yet powerful site dedicated to the victims of the atomic bombing.

Visit the **Atomic Bomb Dome**, a UNESCO World Heritage Site that stands as a stark symbol of peace and resilience. Later, take a scenic ferry ride to **Miyajima Island**, home to the famous **Itsukushima Shrine**, renowned for its iconic "floating" torii gate that appears to rise from the sea during high tide. Explore the shrine and enjoy free time to wander the island's quaint streets, filled with shops and local specialties.

**Meal:** Breakfast

## Day 12: Hiroshima – North America

Enjoy your final morning in Japan before transferring to Hiroshima Airport for your return flight to North America.

**Meal:** Breakfast





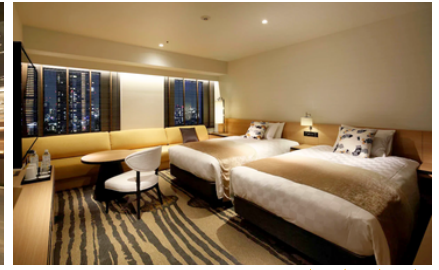
## Package Includes

- Return international airfares from Vancouver; Add-on airfare from other cities available.
- Airline taxes & fuel surcharges
- 8/10 nights 4 star Hotel accommodations
- Hotel taxes, fees & service charges
- Shinkansen ticket from Shin-Fuji to Kyoto (bullet Train)
- Sightseeing per itinerary in modern air-conditioned motor coach
- Meals mentioned in the itinerary
- Lake Kawaguchi Cruise
- Services of English-speaking tour guides
- Entrance fees per itinerary

## Package Does Not Includes

- Visa Fee (If apply)
- Prepaid Tipping:  
10-Day US\$140/person  
12-Day US\$168/person
- Travel insurance.
- Personal expenditures
- 12-Days Land-only price does not include domestic flight (Hiroshima - Tokyo), cost appx. \$180 CAD one-way
- Land Only Price does not include airport transfers

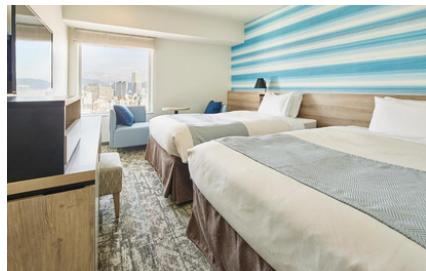
## Featured Hotels



**Sunshine Prince Hotel Ikebukuro** or equivalent



**Motosu Phoenix Hotel Mt. Fuji** or equivalent





**Mitsui Garden Hotel Hiroshima** or equivalent (12 Day Tour)



**Odysis Suite Osaka Airport Hotel** or equivalent



## 2026 Departure Dates

 Mar 26	 Apr 2	Apr 16	May 7	May 21	Sep 10
Sep 17	Oct 8	Oct 15	Oct 23	Nov 12	

## Price Notes

- Prices are per person based on twin share accommodation.
- Single room supplement fee: 10-Day \$1,399 | 12-Day \$1,699
- Add on airfare from other cities: Toronto from \$400; Calgary, Edmonton from \$500; Ottawa, Montreal, Quebec City from \$600; Saskatoon, Regina, Winnipeg, Halifax and other cities from \$600
- Tour prices are subject to change without prior notice.
- Leading price is based on specific departure dates, please check with our website: **tripoppo.com** for the updated information.

